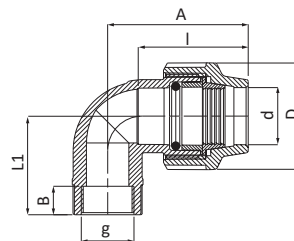


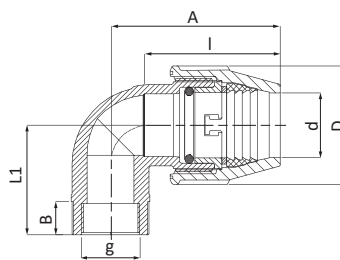


Gomito a 90° con derivazione femmina - 90° elbow with threaded female take off - Coude à 90° avec dérivation femelle - Codo 90° con salida rosca hembra - Winkel 90° mit Innengewinde - Колено 90° с внутренней резьбой



DIM dxg [mmxin.]	CODE	DIM MAX LxHxP [mm]	D [mm]	I [mm]	B [mm]	A [mm]	L1 [mm]	PN [bar]	PACK [UMV]	
									RIF. 2	RIF. 5
16x1/2"	1009016002001	74x69x42	42	39	18	58	48	16	100	-
16x3/4"	1009016003001	76x69x42	42	39	18	58	48	16	100	-
20x1/2"	1009020002001	79x62x46	46	45	18	63	39	16	80	350
20x3/4"	1009020003001	84x63x46	46	45	18	66	40	16	80	330
25x1/2"	1009025002001	95x73x55	55	53	18	77	45	16	50	210
25x3/4"	1009025003001	96x73x55	55	53	18	77	45	16	50	210
25x1"	1009025004001	100x76x55	55	53	20	77	48	16	50	200
32x1/2"	1009032002001	108x80x63	63	57	17	86	48	16	30	130
32x3/4"	1009032003001	108x81x63	63	57	18	86	49	16	30	130
32x1"	1009032004001	109x83x63	63	57	21	86	51	16	30	130
*32x1"1/4	1009032005001	115x92x63	63	57	26	86	60	16	25	110
40x3/4"	1009040003001	132x95x80	80	70	18	105	55	16	15	70
40x1"	1009040004001	132x99x80	80	70	21	105	59	16	15	70
*40x1"1/4	1009040005001	134x104x80	80	70	25	105	64	16	15	60
*40x1"1/2	1009040006001	135x106x80	80	70	25	105	66	16	15	60

>>>



>>>

*50x1"1/4	1009051005001	179x133x96	96	107	24	145	85	16	-	29
*50x1"1/2	1009051006001	179x138x96	96	107	25	145	90	16	-	29
*50x2"	1009051007001	184x138x96	96	107	25	145	90	16	-	29
*63x1"1/2	1009064006001	214x159x115	115	130	26	173	101	16	-	17
*63x2"	1009064007001	214x166x115	115	130	35	173	108	16	-	17
*63x2"1/2	1009064008001	218x166x115	115	130	35	173	108	16	-	17
*75x2"	1009076007001	240x188x129	129	142	36	193	123	16	-	11
*75x2"1/2	1009076008001	240x190x129	129	142	37	193	125	16	-	10
*75x3"	1009076009001	247x194x129	129	142	38	193	129	16	-	10
*90x3"	1009091009001	274x218x155	155	157	40	216	140	16	-	6
*90x4"	1009091010001	281x220x155	155	157	40	216	142	16	-	6
*110x3"	1009111009001	362x226x183	183	222	40	294	134	16	-	4
*110x4"	1009111010001	362x230x183	183	222	40	294	138	16	-	4

* La bocca filettata è rinforzata da un anello di acciaio inox - * The threaded end is reinforced with a stainless steel ring
 * La bouche filetée est renforcée par une bague en acier inox - * La boca filetiada está reforzada por un anillo de acero inox
 * Die Gewindeöffnung ist mit einem Ring aus rostfreiem Stahl verstärkt - * Конец резьбы усилен кольцом из нержавеющей стали