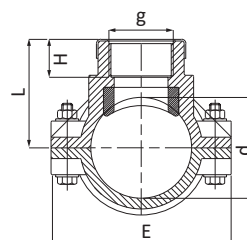
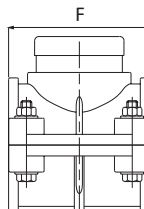


CODE 1031



Pres a staffa con anello di rinforzo



CODE	DIM dxg [mmxin.]	L [mm]	H [mm]	E [mm]	F [mm]	NF	Pmax [bar]	PACK	
								RIF. 2	RIF. 5
1031020002001	20x1/2"	40	25	80	54	2	16	30	-
1031025002001	25x1/2"	37	19	80	54	2	16	30	-
1031025003001	25x3/4"	43	22	80	54	2	16	30	-
1031032002001	32x1/2"	52	24	80	64	4	16	-	90
1031032003001	32x3/4"	46	18	80	64	4	16	-	90
1031040002001	40x1/2"	51	17	87	74	4	16	-	65
1031040003001	40x3/4"	53	20	87	74	4	16	-	65
1031040004001	40x1"	60	21	87	74	4	16	-	65
1031050002001	50x1/2"	65	24	102	78	4	16	-	45
1031050003001	50x3/4"	66	26	102	78	4	16	-	45
1031050004001	50x1"	65	24	102	78	4	16	-	45
1031063002001	63x1/2"	70	24	116	88	4	16	-	30
1031063003001	63x3/4"	70	23	116	88	4	16	-	30
1031063004001	63x1"	70	20	116	88	4	16	-	30
1031063005001	63x1"1/4	70	26	116	88	4	16	-	30
1031063006001	63x1"1/2	70	28	116	88	4	16	-	30
1031075002001	75x1/2"	81	25	130	88	4	16	-	25
1031075003001	75x3/4"	81	26	130	88	4	16	-	25
1031075004001	75x1"	80	26	130	88	4	16	-	25
1031075005001	75x1"1/4	81	26	130	88	4	16	-	25
1031075006001	75x1"1/2	80	26	130	88	4	16	-	25
1031075007001	75x2"	84	30	130	88	4	16	-	25

>>>



>>>

CODE	DIM dxg [mmxin.]	L [mm]	H [mm]	E [mm]	F [mm]	NF	Pmax [bar]	PACK	
								RIF. 2	RIF. 5
1031090002001	90x1/2"	90	25	150	88	4	16	-	20
1031090003001	90x3/4"	90	27	150	88	4	16	-	20
1031090004001	90x1"	90	27	150	88	4	16	-	20
1031090005001	90x1"1/4	90	24	150	88	4	16	-	20
1031090006001	90x1"1/2	90	30	150	88	4	16	-	20
1031090007001	90x2"	90	29	150	88	4	16	-	20
1031110002001	110x1/2"	100	24	175	107	6	16	-	15
1031110003001	110x3/4"	100	27	175	107	6	16	-	15
1031110004001	110x1"	100	25	175	107	6	16	-	15
1031110005001	110x1"1/4	100	26	175	107	6	16	-	15
1031110006001	110x1"1/2	105	30	175	107	6	16	-	15
1031110007001	110x2"	105	30	175	107	6	16	-	15

Fino ad esaurimento scorte