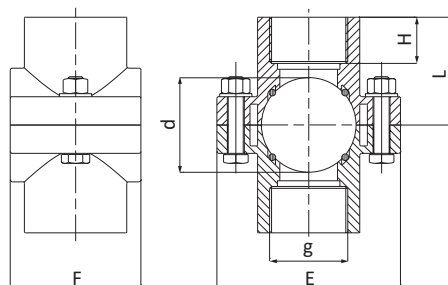


CODE 1020



Presa a staffa doppia



CODE	DIM dxg [mmxin.]	L [mm]	H [mm]	E [mm]	F [mm]	NF	Pmax [bar]	PACK RIF. 5
1020025002001	25x1/2"	38	20	76	49	2	10	160
1020025003001	25x3/4"	38	21	76	49	2	10	160
1020032002001	32x1/2"	41	17	81	56	2	10	110
1020032003001	32x3/4"	41	21	81	56	2	10	110
1020032004001	32x1"	44	23	81	56	2	10	110
1020040002001	40x1/2"	41	17	81	60	2	10	100
1020040003001	40x3/4"	46	18	81	60	2	10	100
1020040004001	40x1"	46	23	81	60	2	10	100
1020050002001	50x1/2"	50	17	98	69	4	10	60
1020050003001	50x3/4"	50	18	98	69	4	10	60
1020050004001	50x1"	52	20	98	69	4	10	60
1020050005001	50x1"1/4	57	25	98	69	4	10	60
1020063002001	63x1/2"	55	16	105	79	4	10	45
1020063003001	63x3/4"	55	18	105	79	4	10	45
1020063004001	63x1"	59	20	105	79	4	10	45
1020063005001	63x1"1/4	63	25	105	79	4	10	45
1020063006001	63x1"1/2	63	28	105	79	4	10	45
1020075002001	75x1/2"	62	17	120	90	4	10	30
1020075003001	75x3/4"	62	18	120	90	4	10	30
1020075004001	75x1"	65	21	120	90	4	10	30
1020075005001	75x1"1/4	68	24	120	90	4	10	30
1020075006001	75x1"1/2	68	23	120	90	4	10	30
1020075007001	75x2"	72	27	120	90	4	10	30

>>>



>>>

CODE	DIM dxg [mmxin.]	L [mm]	H [mm]	E [mm]	F [mm]	NF	Pmax [bar]	PACK RIF. 5
1020090002001	90x1/2"	70	17	135	90	4	10	25
1020090003001	90x3/4"	70	19	135	90	4	10	25
1020090004001	90x1"	72	21	135	90	4	10	25
1020090005001	90x1"1/4	76	24	135	90	4	10	25
1020090006001	90x1"1/2	76	24	135	90	4	10	25
1020090007001	90x2"	80	27	135	90	4	10	25
1020110002001	110x1/2"	80	17	168	99	4	10	15
1020110003001	110x3/4"	80	19	168	99	4	10	15
1020110004001	110x1"	84	20	168	99	4	10	15
1020110005001	110x1"1/4	86	23	168	99	4	10	15
1020110006001	110x1"1/2	86	23	168	99	4	10	15
1020110007001	110x2"	90	27	168	99	4	10	15
1020125002001	125x1/2"	108	25	190	106	6	10	10
1020125003001	125x3/4"	108	26	190	106	6	10	10
1020125004001	125x1"	109	26	190	106	6	10	10
1020125005001	125x1"1/4	109	25	190	106	6	10	10
1020125006001	125x1"1/2	113	28	190	106	6	10	10
1020125007001	125x2"	113	30	190	106	6	10	10