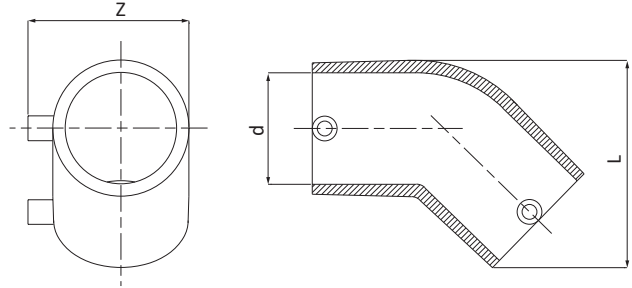


## CODE 3005



Gomito a 45°  
PE100 - S5 Gas - PN 16 20°C



PE100 - SDR11 - S5  
ACQUA: PFA (PN)=16 bar 20°C  
GAS: MOP=10 bar; In Italia MOP=5 bar (D.M. 24/11/84, D.M. 16/4/2008 e successive modifiche)  
Per il tempo di saldatura da utilizzare con tubo SDR26 contattare direttamente Unidelta.

CODE	DIM dx dx [mm]	L [mm]	Z [mm]	W-SDR	PACK					
					RIF. 10	RIF. 11	RIF. 12	RIF. 13	Sfusi	
3005033000001	32x32	69	62	≤ 11	-	20	-	-	-	
3005041000001	40x40	82	71	≤ 17	-	16	-	-	-	
3005051000001	50x50	96	82	≤ 17	-	12	-	-	-	
3005064000001	63x63	113	96	≤ 17	-	-	-	12	-	
3005076000001	75x75	131	109	≤ 17	-	-	-	10	-	
3005091000001	90x90	154	126	≤ 17	18	-	-	-	-	
3005111000001	110x110	184	148	≤ 17	12	-	-	-	-	
3005125000001	125x125	195	178	≤ 17	-	-	-	-	1	
3005140000001	140x140	205	180	≤ 17	-	-	-	-	1	
3005160000001	160x160	220	217	≤ 17	-	-	-	-	1	
3005180000001	180x180	255	240	≤ 17	-	-	-	-	1	
3005200000001	200x200	300	261	≤ 17	-	-	-	-	1	New
3005225000001	225x225	347	292	≤ 17	-	-	-	-	1	New
3005250000001	250x250	381	322	≤ 17	-	-	-	-	1	New