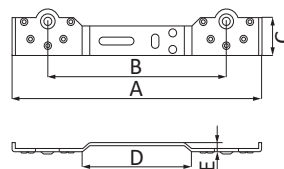




CODE 4017

Dima di fissaggio semplice

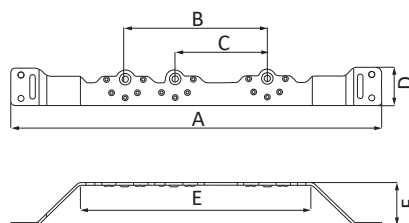


CODE	A [mm]	B [mm]	C [mm]	D [mm]	E [mm]
401700000001	213	153	31,5	95	7,5



CODE 4018

Dima di fissaggio angolata multipla



CODE	A [mm]	B [mm]	C [mm]	D [mm]	E [mm]	F [mm]
401800000001	398	153	100	40	250	45