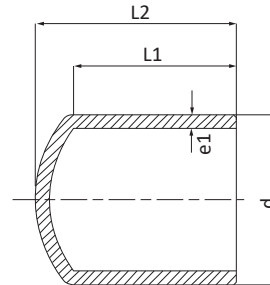


## CODE 3154 - PN 10 / CODE 3144 - PN 16



Tappo fine linea testa/testa - Butt fusion end cap - Bouchon fin de ligne bout à bout  
 Tapón, soldadura a tope - Stumpfstoß-Endverschluss - Заглушка для стыковой сварки



### 3144

PE100 - SDR11 - S5  
 ACQUA: PFA (PN)=16 bar 20°C  
 GAS: MOP=10 bar; In Italia MOP=5 bar (D.M. 24/11/84, D.M 16/4/2008 e successive modifiche)

PE100 - SDR11 - S5  
 WATER: PFA (PN)=16 bar 20°C  
 GAS: MOP=10 bar; in Italy MOP=5 bar (D.M. 24/11/84, D.M 16/4/2008 and further modification)

### 3154

PE100 - SDR17 - S8  
 ACQUA: PFA (PN)=10 bar 20°C  
 GAS: MOP=6,2 bar; In Italia MOP=3,7 bar (D.M. 24/11/84, D.M 16/4/2008 e successive modifiche)

PE100 - SDR17 - S8  
 WATER: PFA (PN)=10 bar 20°C  
 GAS: MOP=6,2 bar; in Italy MOP=3,7 bar (D.M. 24/11/84, D.M 16/4/2008 and further modification)

DIM d [mm]	PN 10 - SDR 17 - S8		PN 16 - SDR 11 - S5		L1 [mm]	L2 [mm]	PACK		
	CODE	e	CODE	e			RIF. 13	RIF. 14	Sfusi Loose
25	-		3144025000001	3,0	65	69	250	-	-
32	-	-	3144032000001	3,0	54	57	200	-	-
40	-	-	3144040000001	3,7	60	66	120	-	-
50	-	-	3144050000001	4,6	62	73	70	-	-
63	3154063000001	3,8	3144063000001	5,8	64	77	40	-	-
75	3154075000001	4,5	3144075000001	6,8	75	86	25	-	-
90	3154090000001	5,4	3144090000001	8,2	83	101	-	60	-
110	3154110000001	6,6	3144110000001	10,0	91	116	-	32	-
125	3154125000001	7,4	3144125000001	11,4	103	120	-	25	-
140	3154140000001	8,3	3144140000001	12,7	104	120	-	24	-
160	3154160000001	9,5	3144160000001	14,6	102	126	-	18	-
180	3154180000001	10,7	3144180000001	16,4	115	140	-	12	-
200	3154200000001	11,9	3144200000001	18,2	128	155	-	8	-
225	3154225000001	13,4	3144225000001	20,5	120	160	-	-	1
250	3154250000001	14,8	3144250000001	22,7	132	178	-	-	1
280	3154280000001	16,6	3144280000001	25,4	150	230	-	-	1
315	3154315000001	18,7	3144315000001	28,6	175	290	-	-	1