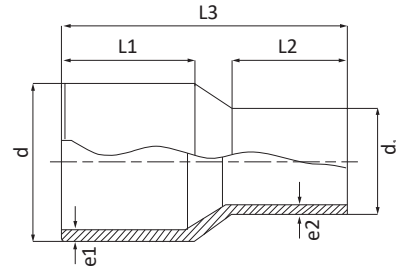


CODE 3150 - PN 10 / CODE 3140 - PN 16



Riduzione testa/testa - Butt fusion reducer - Réduction bout à bout - Reducción, soldadura a tope - Stumpfstoß-Reduktion
 Редукционная муфта для стыковой сварки



3140

PE100 - SDR11 - S5
 ACQUA: PFA (PN)=16 bar 20°C
 GAS: MOP=10 bar; In Italia MOP=5 bar (D.M. 24/11/84, D.M 16/4/2008 e successive modifiche)

PE100 - SDR11 - S5
 WATER: PFA (PN)=16 bar 20°C
 GAS: MOP=10 bar; in Italy MOP=5 bar (D.M. 24/11/84, D.M 16/4/2008 and further modification)

3150

PE100 - SDR17 - S8
 ACQUA: PFA (PN)=10 bar 20°C
 GAS: MOP=6,2 bar; In Italia MOP=3,7 bar (D.M. 24/11/84, D.M 16/4/2008 e successive modifiche)

PE100 - SDR17 - S8
 WATER: PFA (PN)=10 bar 20°C
 GAS: MOP=6,2 bar; in Italy MOP=3,7 bar (D.M. 24/11/84, D.M 16/4/2008 and further modification)

DIM dxd ₁ [mm]	PN 10 - SDR 17 - S8		PN 16 - SDR 11 - S5		L1 [mm]	L2 [mm]	L3 [mm]	PACK		
	CODE	e1-e2	CODE	e1-e2				RIF. 13	RIF. 14	Sfusi Loose
25x20	-	-	3140025020001	3,0-3,0	50	50	114	250	-	-
32x25	-	-	3140032025001	3,0-3,0	60	54	129	100	-	-
40x20	-	-	3140040020001	3,7-3,0	60	50	132	125	-	-
40x25	-	-	3140040025001	3,7-3,0	60	55	128	125	-	-
40x32	-	-	3140040032001	3,7-3,0	62	50	125	85	-	-
50x25	-	-	3140050025001	4,6-3,0	60	42	117	82	-	-
50x32	-	-	3140050032001	4,6-3,0	60	42	117	82	-	-
50x40	-	-	3140050040001	4,6-3,7	60	51	117	54	-	-
63x25	-	-	3140063025001	5,8-3,0	65	46	132	40	-	-
63x32	3150063032001	3,8-2,0	3140063032001	5,8-3,0	65	46	132	40	-	-
63x40	3150063040001	3,8-2,4	3140063040001	5,8-3,7	65	46	132	40	-	-
63x50	3150063050001	3,8-3,0	3140063050001	5,8-4,6	65	58	132	36	-	-
75x40	3150075040001	4,5-2,4	3140075040001	6,8-3,7	74	50	143	24	-	-
75x50	3150075050001	4,5-3,0	3140075050001	6,8-4,6	74	60	143	24	-	-
75x63	3150075063001	4,5-3,8	3140075063001	6,8-5,8	74	60	143	20	-	-
90x50	3150090050001	5,4-3,0	3140090050001	8,2-4,6	80	60	161	15	-	-
90x63	3150090063001	5,4-3,8	3140090063001	8,2-5,8	80	70	161	15	-	-
90x75	3150090075001	5,4-4,5	3140090075001	8,2-6,8	80	74	165	13	-	-



>>>

DIM dxd ₁ [mm]	PN 10 - SDR 17 - S8		PN 16 - SDR 11 - S5		L1 [mm]	L2 [mm]	L3 [mm]	PACK		
	CODE	e1-e2	CODE	e1-e2				RIF. 13	RIF. 14	Sfusi Loose
110x50	3150110050001	6,6-3,0	3140110050001	10,0-4,6	85	65	178	9	-	-
110x63	3150110063001	6,6-3,8	3140110063001	10,0-5,8	85	65	178	9	-	-
110x75	3150110075001	6,6-4,5	3140110075001	10,0-6,8	85	77	178	9	-	-
110x90	3150110090001	6,6-5,4	3140110090001	10,0-8,2	85	77	178	6	-	-
125x75	3150125075001	7,4-4,5	3140125075001	11,4-6,8	87	78	186	-	22	-
125x90	3150125090001	7,4-5,4	3140125090001	11,4-8,2	87	82	186	-	22	-
125x110	3150125110001	7,6-6,6	3140125110001	11,4-10,0	87	84	186	-	19	-
140x90	3150140090001	8,3-5,4	3140140090001	12,7-8,2	96	80	208	-	18	-
140x110	3150140110001	8,3-6,6	3140140110001	12,7-10,0	96	92	208	-	18	-
140x125	3150140125001	8,3-7,4	3140140125001	12,7-11,4	96	88	199	-	15	-
160x90	3150160090001	9,5-5,4	3140160090001	14,6-8,2	101	84	225	-	14	-
160x110	3150160110001	9,5-6,6	3140160110001	14,6-10,0	102	86	216	-	14	-
160x125	3150160125001	9,5-7,4	3140160125001	14,6-11,4	101	90	208	-	12	-
160x140	3150160140001	9,5-8,3	3140160140001	14,6-12,7	101	91	204	-	10	-
180x125	3150180125001	10,7-7,4	3140180125001	16,4-11,4	108	90	225	-	10	-
180x140	3150180140001	10,7-8,3	3140180140001	16,4-12,7	104	96	232	-	10	-
180x160	3150180160001	10,7-9,5	3140180160001	16,4-14,6	105	102	230	-	8	-
200x140	3150200140001	11,9-8,3	3140200140001	18,2-12,7	114	96	232	-	8	-
200x160	3150200160001	11,9-9,5	3140200160001	18,2-14,6	114	100	252	-	5	-
200x180	3150200180001	11,9-10,7	3140200180001	18,2-16,4	116	110	236	-	5	-
225x160	3150225160001	13,4-9,5	3140225160001	20,5-14,6	134	120	300	-	-	1
225x180	3150225180001	13,4-10,7	3140225180001	20,5-16,4	135	125	288	-	-	1
225x200	3150225200001	13,4-11,9	3140225200001	20,5-18,2	132	130	277	-	-	1
250x180	3150250180001	14,8-10,7	3140250180001	22,7-16,4	140	124	309	-	-	1
250x200	3150250200001	14,8-11,9	3140250200001	22,7-18,2	139	127	298	-	-	1
250x225	3150250225001	14,8-13,4	3140250225001	22,7-20,5	139	133	300	-	-	1
315x225	3150315225001	18,7-13,4	3140315225001	26,6-20,5	175	140	395	-	-	1
315x250	3150315250001	18,7-14,8	3140315250001	28,6-22,7	173	150	385	-	-	1