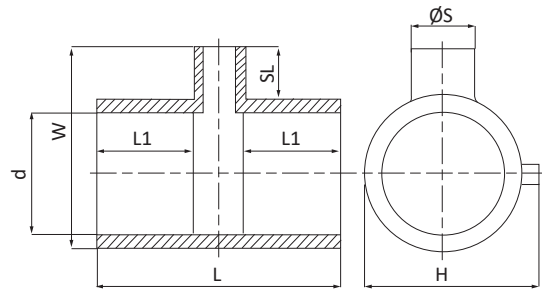


## CODE 3007



Ti a 90° ridotto - 90° Reducing tee - Té à 90° réduit - Te reducida - T-Stück 90° reduziert - Тройник 90° редуционный  
PE100 - S5 Gas - PN 16 20°C



PE100 - SDR11 - S5  
ACQUA: PFA (PN)=16 bar 20°C  
GAS: MOP=10 bar; In Italia MOP=5 bar (D.M. 24/11/84, D.M. 16/4/2008 e successive modifiche)  
Per il tempo di saldatura da utilizzare con tubo SDR26 contattare direttamente Unidelta.

PE100 - SDR11 - S5  
WATER: PFA (PN)=16 bar 20°C  
GAS: MOP=10 bar; in Italy MOP=5 bar (D.M. 24/11/84, D.M. 16/4/2008 and further modification)  
Contact Unidelta directly for the welding time to be used with SDR26 pipe.

CODE	DIM dxØSxd [mm]	H [mm]	W [mm]	L [mm]	L1 [mm]	SL [mm]	W-SDR	PACK					
								RIF. 10	RIF. 11	RIF. 12	RIF. 13	Sfusi Loose	
3007091064001	90x63x90	126	196	201	62	84	≤ 17	10	-	-	-	-	New
3007091076001	90x75x90	126	203	201	62	91	≤ 17	10	-	-	-	-	New
3007111064001	110x63x110	148	223	237	72	87	≤ 17	8	-	-	-	-	New
3007111091001	110x90x110	148	239	237	72	103	≤ 17	6	-	-	-	-	New
3007160090001	160x90x160	218	320	340	170	105	≤ 17	-	-	-	-	1	
3007180090001	180x90x180	245	345	360	180	105	≤ 17	-	-	-	-	1	