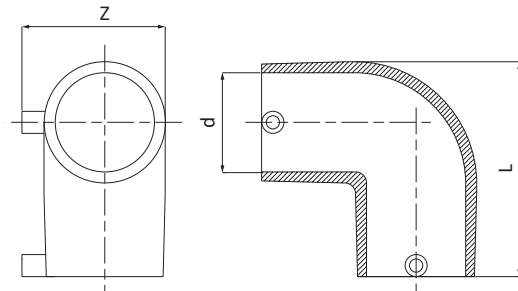




CODE 3004

Gomito a 90° - Elbow 90° - Coude à 90° - Codo a 90° - Winkel 90° - Колено 90°
PE100 - S5 Gas - PN 16 20°C



PE100 - SDR11 - S5
ACQUA: PFA (PN)=16 bar 20°C
GAS: MOP=10 bar; In Italia MOP=5 bar (D.M. 24/11/84, D.M. 16/4/2008 e successive modifiche)
Per il tempo di saldatura da utilizzare con tubo SDR26 contattare direttamente Unidelta.

PE100 - SDR11 - S5
WATER: PFA (PN)=16 bar 20°C
GAS: MOP=10 bar; in Italy MOP=5 bar (D.M. 24/11/84, D.M. 16/4/2008 and further modification)
Contact Unidelta directly for the welding time to be used with SDR26 pipe.

CODE	DIM dxd [mm]	L [mm]	Z [mm]	W-SDR	PACK						Sfusi Loose
					RIF.5	RIF. 10	RIF. 11	RIF. 12	RIF. 13	RIF. 14	
3004021000001	20x20	62	50	≤ 11	-	-	40	-	-	-	-
3004026000001	25x25	69	55	≤ 11	-	-	25	-	-	-	-
3004033000001	32x32	77	62	≤ 11	-	-	20	-	-	-	-
3004041000001	40x40	88	71	≤ 17	-	-	12	-	-	-	-
3004051000001	50x50	103	82	≤ 17	-	-	10	-	-	-	-
3004064000001	63x63	121	96	≤ 17	-	-	-	-	10	-	-
3004076000001	75x75	142	109	≤ 17	-	-	-	-	8	-	-
3004091000001	90x90	166	126	≤ 17	-	16	-	-	-	-	-
3004111000001	110x110	198	148	≤ 17	-	-	-	-	-	10	-
3004125000001	125x125	241	178	≤ 17	6	-	-	-	-	-	-
3004140000001	140x140	280	180	≤ 17	-	-	-	-	-	-	1
3004160000001	160x160	298	217	≤ 17	2	-	-	-	-	-	-
3004180000001	180x180	323	240	≤ 17	-	-	-	-	-	-	1
3004200000001	200x200	335	261	≤ 17	-	-	-	-	-	-	1 <i>New</i>
3004225000001	225x225	376	292	≤ 17	-	-	-	-	-	-	1 <i>New</i>
3004250000001	250x250	409	322	≤ 17	-	-	-	-	-	-	1 <i>New</i>