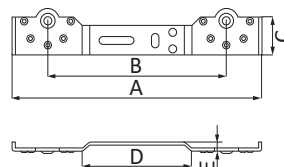




CODE 4017

Dima di fissaggio semplice - Simple fixing template - Gabarit de fixation simple
 Plantilla de fijación sencilla - Einfache Befestigungsschablone - Крепёжная пластина простая

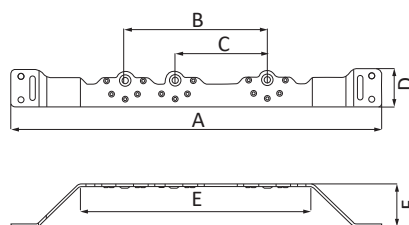


CODE	A [mm]	B [mm]	C [mm]	D [mm]	E [mm]
4017000000001	213	153	31,5	95	7,5

CODE 4018



Dima di fissaggio angolata multipla - Multiple angles fixing template - Gabarit de fixation à angles multiples
 Plantilla de fijación con ángulo múltiple - Mehreck Befestigungsschablone - Крепёжная пластина угловая



CODE	A [mm]	B [mm]	C [mm]	D [mm]	E [mm]	F [mm]
4018000000001	398	153	100	40	250	45