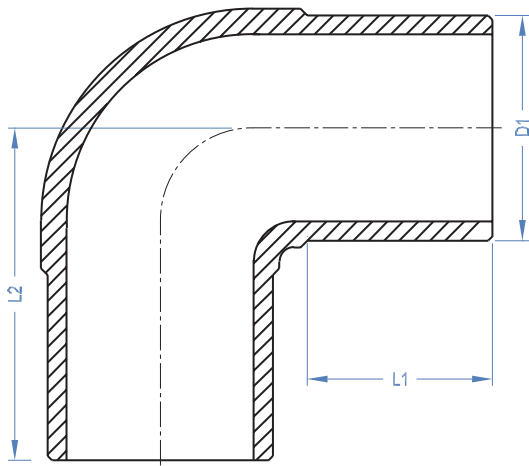


TECHNICAL SHEETS

COD. 3141



CURVA A 90° TESTA A TESTA
BUTT FUSION ELBOW 90°



COD	D1	L1	L2
3141025000001	25	61	80
3141032000001	32	60	81
3141040000001	40	60	85
3141050000001	50	60	89
3141063000001	63	66	100
3141075000001	75	71	114
3141090000001	90	81	130
3141110000001	110	85	146
3141125000001	125	90	159
3141140000001	140	95	172
3141160000001	160	114	225
3141180000001	180	120	226
3141200000001	200	127	248
3141225000001	225	137	285
3141250000001	250	140	309
3141280000001	280	-	-
3141315000001	315	168	367

PE100 - SDR11 - S5

ACQUA: PFA (PN)=16 bar 20°C

GAS: MOP=10 bar; In Italia MOP=5 bar (D.M. 24/11/84 e successive modifiche)

WATER: PFA (PN)=16 bar 20°C

GAS: MOP=10 bar; In Italy MOP=5 bar (D.M. 24/11/84 and further modification)